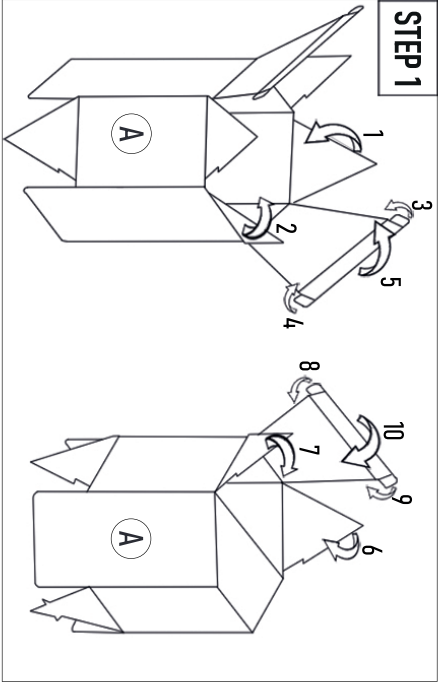


ZEROTAB Waste Paper Stool Installation Guide

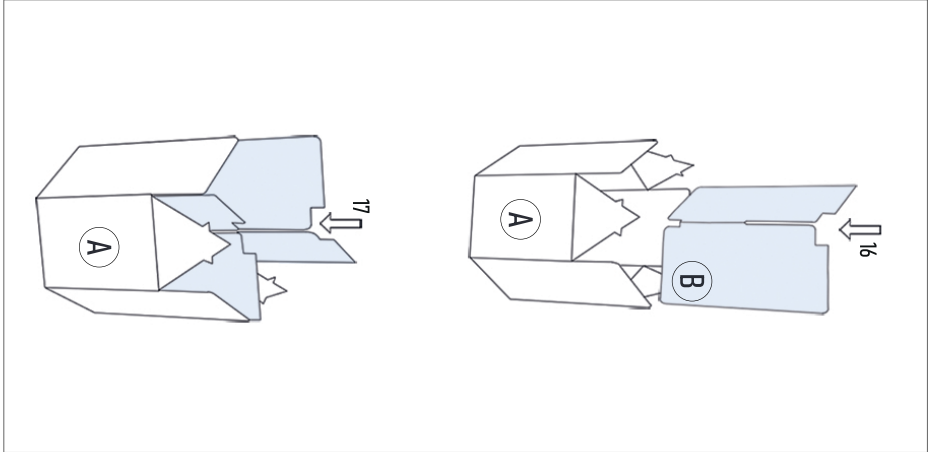
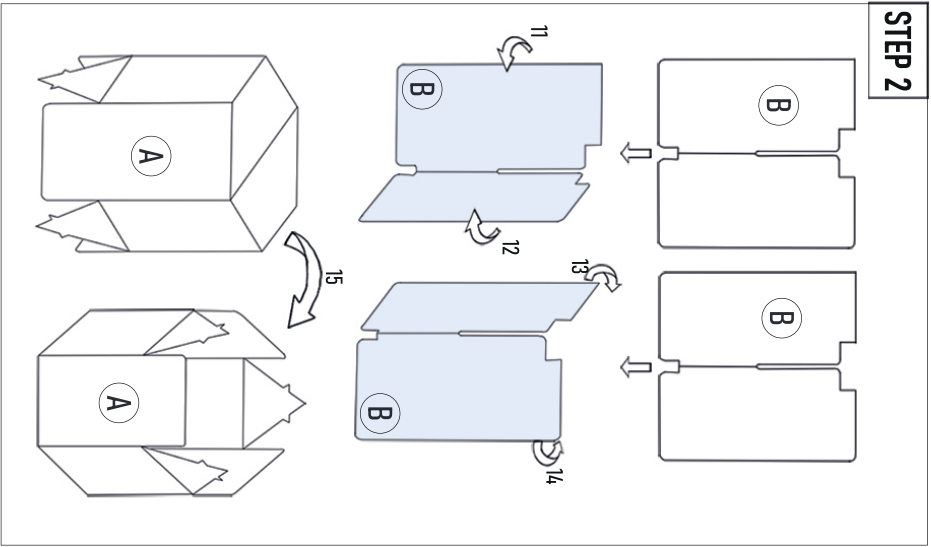
Part Description	Visual Reference	Quantity
Main Body(Hexagonal Structure)	A	x 1
Stool Leg Panel(Large)	B	x 2
Final Leg Panel(Closing Piece)	C	x 1

STEP 1: Set up the Main Structure

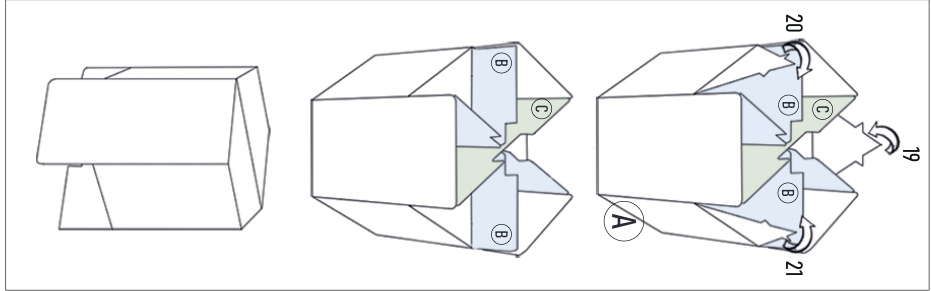
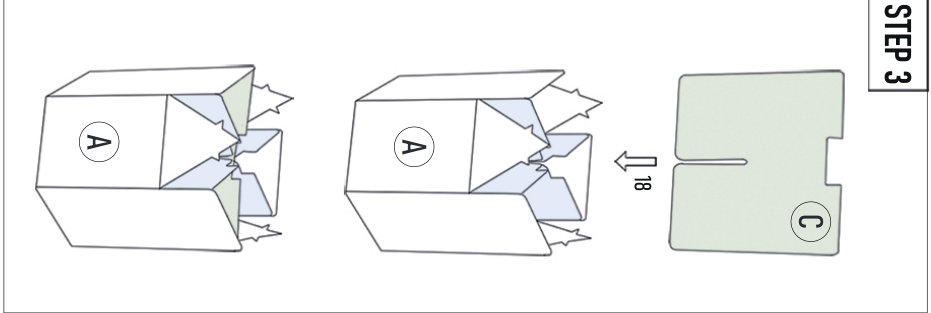
- Take the main body (A).
- Following the numerical order, begin folding the triangular flaps inwards, followed by the top flaps, by tracking the arrows in the diagram.
- Once the folding is complete, the top view should be hexagonal.



STEP 2



STEP 3



Step 2: Place the Stool Legs inside the Hexagonal Structure

- Take two identically sized stool legs (Parts B).
- Take the first of the two identically sized stool legs, and gently bend it slightly inwards along the dashed lines in the middle, then insert it into the main body which you have turned upside down.

- Hook the gap under Part B onto the tabs inside the main body. Repeat the same procedures for the second Part B.

Step 3: Final Locking Steps

- Insert the final leg panel (Part C) into the slot located in the middle of the crossed legs.
- Fold the triangular parts inwards to lock the structure into place. Secure the edge tabs by pushing them through the holes.

• Your stool assembly is now complete.

